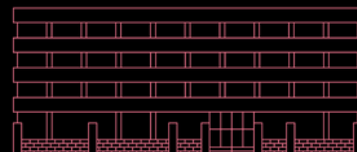


BASED IN THE BEATING HEART OF STOKES CROFT IN BRISTOL, HAMILTON HOUSE OFFERS A WIDE RANGE OF SPACES TO SUIT ALMOST ANY TYPE OF EVENT. FROM THE LARGE MULTI-USE EVENT SPACE, THROUGH TO SMALLER MEETING ROOMS, WE HAVE A SPACE TO SUIT YOUR NEEDS.

**Minimum hire period is 1 hour.** Please note, payment will be taken 7 days before the start of your booking. If your booking is in fewer than 7 days, the payment will be taken immediately. A day hire runs 8:30 - 17:30. Any hours outside of this will be charged at the weekend rate.

**Cancellation policy:** 7 days priority to event start date for a full refund.



[haho@forwardspace.co.uk](mailto:haho@forwardspace.co.uk) / 0117 325 9040 / [hamilton-house.org](http://hamilton-house.org)

80 Stokes Croft, Bristol, St Paul's, BS1 3QY

 [@hamiltonhousebristol](https://www.instagram.com/hamiltonhousebristol)

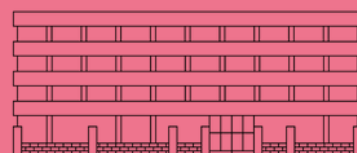


# EVENT SPACE

The Event Space at Hamilton House is perfect for theatre productions, rehearsals, large meetings and workshops.

|                 | WEEKDAYS   | WEEKENDS   |
|-----------------|--|--|
| PRICE           | £40* p/h / £280* p/d<br>(hourly rate increases to £52.50* after 17:30) | £52.50* p/h / £367.50* p/d   |
| SIZE            |  | 130 sqm  |
| CAPACITY        |  | 120 seated / 200 standing  |
| EQUIPMENT       |  | Stage lighting, blackout blinds, PA system<br>microphones & speakers, stage blocks |
| ACCESSIBILITY   |  | Wheelchair accessible  |
| OPTIONAL EXTRAS |  | Projector, Tea & coffee  |

\*prices exclude VAT





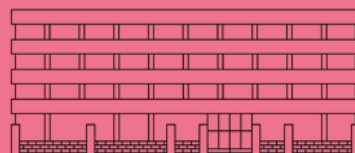
# MILD WEST ROOM

The Mild West is ideal for workshops, larger meetings, classes and presentations.



|                 | WEEKDAYS   | WEEKENDS                   |
|-----------------|--|----------------------------|
| PRICE           | £30* p/h / £210* p/d<br>(hourly rate increases to £42.50* after 17:30) | £42.50* p/h / £297.50* p/d |
| SIZE            | 65 sqm   |                            |
| CAPACITY        | 60 seated / 100 standing   |                            |
| EQUIPMENT       | Projector & screen, carpeted flooring                                  |                            |
| ACCESSIBILITY   | Wheelchair accessible  |                            |
| OPTIONAL EXTRAS | Tea & coffee   |                            |

\*prices exclude VAT





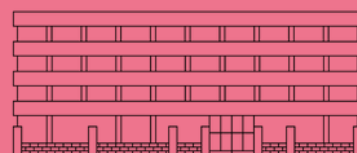


# THE ART ROOM

Ideal for art workshops and classes or even artists that are looking for a space by the hour.

|                 | WEEKDAYS   | WEEKENDS                   |
|-----------------|--|----------------------------|
| PRICE           | £20* p/h / £140* p/d<br>(hourly rate increases to £32.50* after 17:30) | £32.50* p/h / £227.50* p/d |
| SIZE            | 50 sqm   |                            |
| CAPACITY        | 40 seated / 60 standing  |                            |
| EQUIPMENT       | Picture rail included, hard wipe-clean floor, white walls              |                            |
| ACCESSIBILITY   | Wheelchair accessible  |                            |
| OPTIONAL EXTRAS | Projector, Tea & coffee  |                            |

\*prices exclude VAT





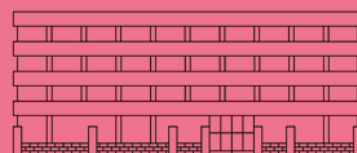
# THE DEN

A snug meeting room perfect for 1-1 meetings



|                 | WEEKDAYS   | WEEKENDS                   |
|-----------------|--|----------------------------|
| PRICE           | £15* p/h / £105* p/d<br>(hourly rate increases to £27.50* after 17:30) | £27.50* p/h / £192.50* p/d |
| SIZE            | 12.5 sqm   |                            |
| CAPACITY        | 8 seated / 12 standing   |                            |
| EQUIPMENT       | White wall for projecting, carpeted flooring                           |                            |
| ACCESSIBILITY   | Wheelchair accessible  |                            |
| OPTIONAL EXTRAS | Projector, Tea & coffee  |                            |

\*prices exclude VAT





# THE GREEN ROOM

A light and calm meeting room for up to 20 people seated. This space is also ideal for smaller workshops or presentations.

|                 | WEEKDAYS                                     | WEEKENDS                |
|-----------------|--|-------------------------|
| PRICE           | £25 p/h £175 p/d                             | £37.50 p/h £262.50 p/d  |
| SIZE            |  | 32.5 sqm                |
| CAPACITY        |  | 50 standing 20 seated   |
| EQUIPMENT       | Tables and chairs, white wall for projecting |                         |
| ACCESSIBILITY   |  | Wheelchair accessible   |
| OPTIONAL EXTRAS |  | Projector, Tea & coffee |

*\*prices exclude VAT*

