

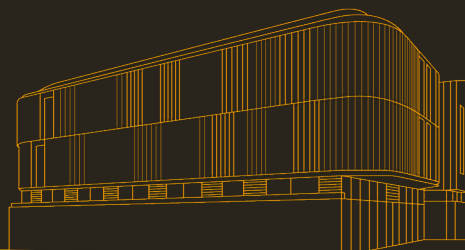


A **FORWARD®** SPACE

PIXEL OFFERS A VARIETY OF SPACES IN THE HEART OF PENZANCE. FROM MEETING ROOMS IDEAL FOR SMALL AND MEDIUM SIZE GROUPS, THROUGH TO A LARGE EVENT SPACE FOR UP TO 150 PEOPLE.

Minimum hire period is 1 hour. Please note, payment will be taken 7 days before the start of your booking. If your booking is in fewer than 7 days, the payment will be taken immediately. A day hire runs 8:30 - 17:30. Any hours outside of this will be charged at the weekend rate.

Cancellation policy: 7 days priority to event start date for a full refund.



pixelpenzance.co.uk

Causewayhead, Penzance, Cornwall, TR18 2AA

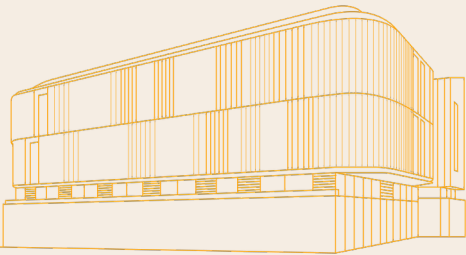
@pixelpenzance

MEETING ROOM

FIRST FLOOR



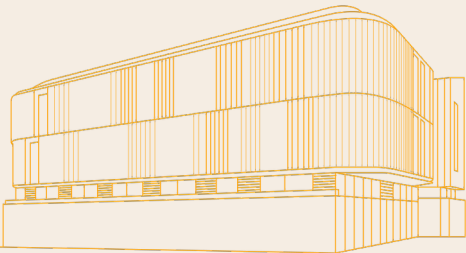
PRICE	£25.00 ph £175.00 pd
SIZE	16sqm
CAPACITY	6-8 people
EQUIPMENT	TV, Video conferencing for screen sharing
ACCESSIBILITY	Wheelchair accessible, accessible toilets and lift. Neighbouring kitchen for teas, coffees and fridge space.
OPTIONAL EXTRAS	Tea and coffee, lunch package (tbc - discuss with hosts)
*pricesexclude VAT	



MEETING ROOM SECOND FLOOR



PRICE	£25.00 ph £175.00 pd
SIZE	16sqm
CAPACITY	6-8 people
EQUIPMENT	TV, Video conferencing for screen sharing
ACCESSIBILITY	Wheelchair accessible, accessible toilets and lift. Neighbouring kitchen for teas, coffees and fridge space.
OPTIONAL EXTRAS	Tea and coffee, lunch package (tbc - discuss with hosts)
*pricesexclude VAT	



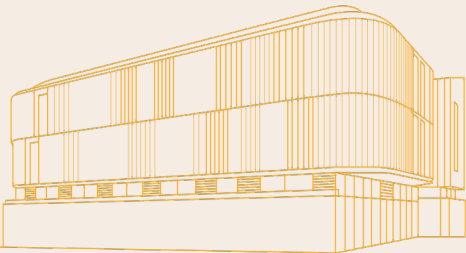
STUDIO 1.01

REHERSAL SPACE (UNFURNISHED)



PRICE	£20.00 ph £120.00 pd
SIZE	58.5 sqm
CAPACITY	20+ people
EQUIPMENT	Unfurnished space for rehearsals or workshops, chairs available
ACCESSIBILITY	Wheelchair accessible, accessible toilets and lift. Neighbouring kitchen for teas, coffees and fridge space.
OPTIONAL EXTRAS	Tea and coffee, lunch package (tbc - discuss with hosts)

*pricesexclude VAT



EVENT/GALLERY SPACE



PRICE	£50.00 ph £350.00 pd
SIZE	65 sqm
CAPACITY	100 standing, 50 seated
EQUIPMENT	Projector, (will be hanging system for artwork)
ACCESSIBILITY	Wheelchair accessible, accessible toilets and lift. Neighbouring kitchen for teas, coffees and fridge space.
OPTIONAL EXTRAS	Tea and coffee, lunch package (tbc - discuss with hosts)
*pricesexclude VAT	

